



Meaningful Innovation.

WEEE Number: 80133970

# INSTRUCTION MANUAL

## POLE LAMP



### TECHNICAL DATA

|             |                         |
|-------------|-------------------------|
| MODEL       | VT-737                  |
| SKU         | 7060                    |
| MAX WATTS   | 60W                     |
| IP RATING   | IP44                    |
| HOLDER      | E27 [Bulb not included] |
| BODY TYPE   | Aluminium + PC          |
| INPUT POWER | AC: 220-240, 50Hz       |
| DIMENSION   | 345x1365 mm             |

**03** YEAR  
WARRANTY\*

### INTRODUCTION & WARRANTY

Thank you for selecting and buying V-TAC product. V-TAC will serve you the best. Please read these instructions carefully before starting the installation and keep this manual handy for future reference. If you have any another query, please contact our dealer or local vendor from whom you have purchased the product. They are trained and ready to serve you at the best. The warranty is valid for 3 years from the date of purchase. The warranty does not apply to damage caused by incorrect installation or abnormal wear and tear. The company gives no warranty against damage to any surface due to incorrect removal and installation of the product. This product is warranted for manufacturing defects only.



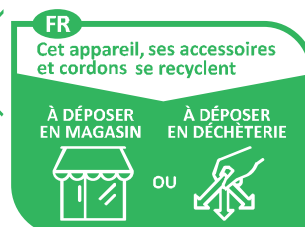
This marking indicates that this product should not be disposed of with other household wastes.



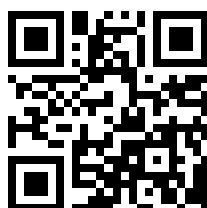
Caution, risk of electric shock.

### WARNING

1. Please make sure to turn off the power before starting the installation.
2. Installation must be performed by a qualified electrician.
3. Proper grounding should be ensured throughout the installation.
4. User should prepare necessary accessories and spare parts (Not Provided)
5. For Indoor Use only



Points de collecte sur [www.quefairedemesdechets.fr](http://www.quefairedemesdechets.fr)  
Privilégiez la réparation ou le don de votre appareil !

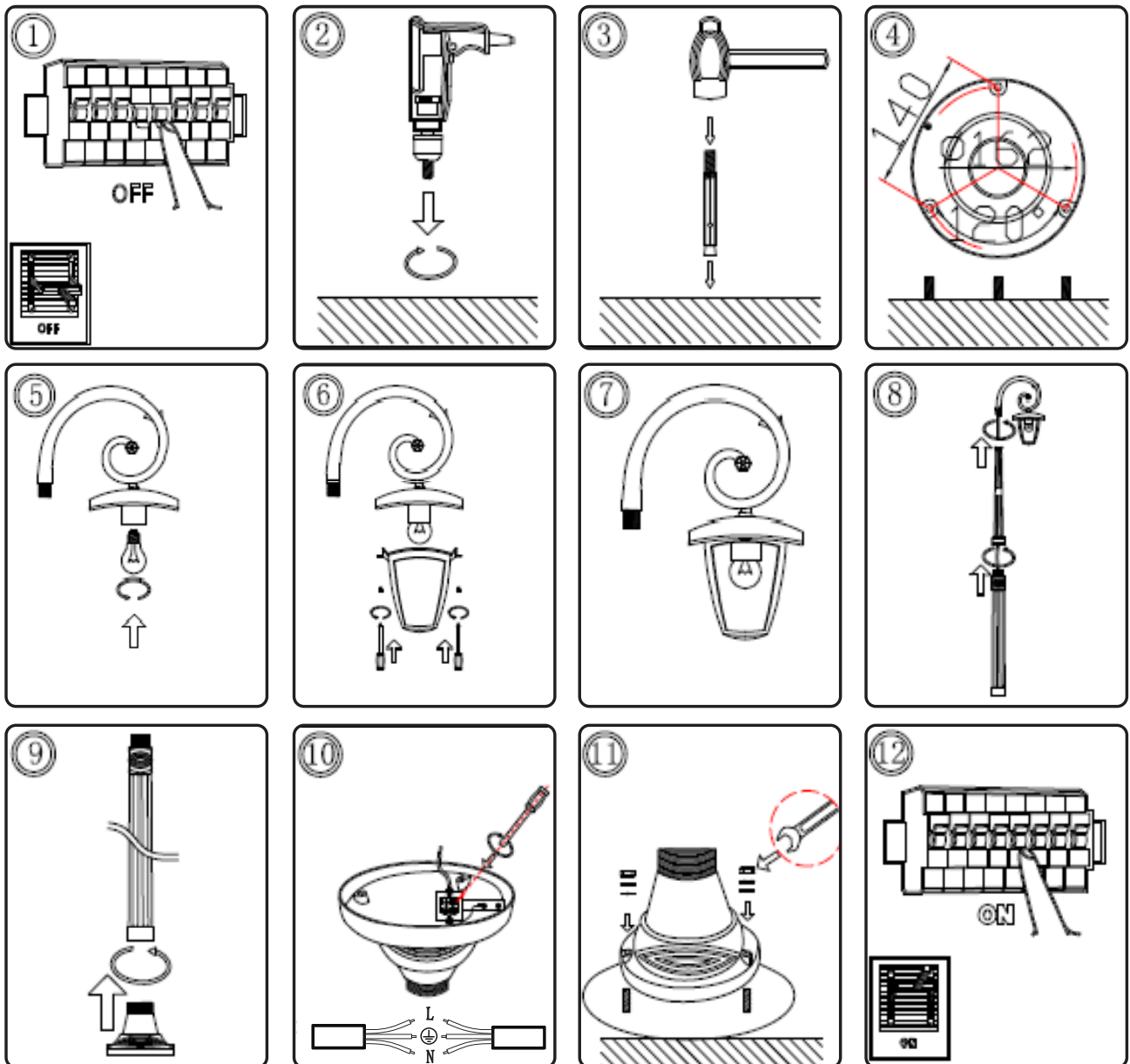


**MULTI-LANGUAGE  
MANUAL QR CODE**

Please scan the QR code to access the manual in multiple languages.

In case of any query/issue with the product, please reach out to us at: [support@v-tac.eu](mailto:support@v-tac.eu)  
For More products range, inquiry please contact our distributor or nearest dealers.  
V-TAC EUROPE LTD. Bulgaria, Plovdiv 4000, bul.L.Karavelow 9B

## INSTALLATION INSTRUCTIONS



1. Turn off the power.
2. Drill a hole in the ground (as per the distance showed on pic 4).
3. Dig the screws into the hole.
4. Fixing the bracket onto the ground.
5. Open the lamp and install the bulb in the lamp. Close the lamp and tighten the screws.
6. Put the wire into the pole, and assemble the pole together with the base.
7. Connect supply leads with terminal brown (L) to brown, blue (N) to blue and greenish-yellow (⊕) to greenish-yellow.
8. Tighten the nuts to fix down the lamp.
9. Turn on the Power.

RoHS



UK  
CA

