

# V-TAC

Meaningful Innovation.

WEEE Number: 80133970

## INSTRUCTION MANUAL LED SOLAR FLOOD LIGHT



**03** YEAR  
WARRANTY\*

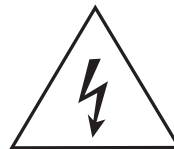
**IP65**  
RATING

### INTRODUCTION & WARRANTY

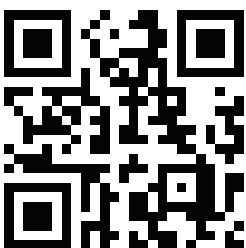
Thank you for selecting and buying V-TAC product. V-TAC will serve you the best. Please read these instructions carefully before starting the installation and keep this manual handy for future reference. If you have any another query, please contact our dealer or local vendor from whom you have purchased the product. They are trained and ready to serve you at the best. The warranty is valid for 3 years from the date of purchase. The warranty does not apply to damage caused by incorrect installation or abnormal wear and tear. The company gives no warranty against damage to any surface due to incorrect removal and installation of the product. The products are suitable for 10-12 Hours Daily operation. Usage of product for 24 Hours a day would void the warranty. This product is warranted for manufacturing defects only.



This marking indicates that this product should not be disposed of with other household wastes.



Caution, risk of electric shock.



### MULTI-LANGUAGE MANUAL QR CODE

Please scan the QR code to access the manual in multiple languages.



FR

Cet appareil, ses accessoires, cordons et batteries se recyclent

À DÉPOSER EN MAGASIN

À DÉPOSER EN DÉCHÈTERIE



OU



Points de collecte sur [www.quefairedemesdechets.fr](http://www.quefairedemesdechets.fr)  
Privilégiez la réparation ou le don de votre appareil !

IN CASE OF ANY QUERY/ISSUE WITH THE PRODUCT, PLEASE REACH OUT TO US AT: [SUPPORT@V-TAC.EU](mailto:SUPPORT@V-TAC.EU)  
FOR MORE PRODUCTS RANGE, INQUIRY PLEASE CONTACT OUR DISTRIBUTOR OR NEAREST DEALERS.  
V-TAC EUROPE LTD. BULGARIA, PLOVDIV 4000, BUL.L.KARAVELOW 9B

## TECHNICAL DATA

MODEL	VT-411 CCT	VT-432CCT
SKU	23756	24277
LUMENS	1500 LM	4800 LM
EQUIVALENT WATT	100 W	300 W
LEDs	SMD 2835x88pcs	SMD 2835x180 pcs
BATTERY PACK	Li-ion Battery, 18650 3.7V, 3600mAh, 13.32Wh	LiFePO4 Battery, 32700, 6.4v, 6000mAh, 38.4Wh
MONO SOLAR PANEL	4.5W, 6V	10.5W,10V
DIGITAL PIR SENSOR	120°/6 Meters	120°/8 Meters
LIGHTING AREA	60-80m <sup>2</sup>	100-150m <sup>2</sup>
LAMP SIZE	152.7x146.8x31.2mm	199.7x190.9x49mm
SOLAR PANEL SIZE	202.1x220.9x24mm	374.3x255.2x21.5mm
INSTALLED HEIGHT	2~4 Meters	2~5 Meters
INSTALLATION DISTANCE	6-8 Meters	10-14 Meters
WARRANTY	3 Years Warranty	
BEAM ANGLE	120°x60°, Maximum Lighting design, Bigger Lighting Area	
WORKING MODES	Auto Sensor Mode Keep Lighting Mode (Can DIY Brightness and lighting time by remote)	
CHARGING TIME	5-6Hours Strong sunshine to fully charge	
LIGHTING TIME	Up to 60Hours according to different working mode	
LAMP BRACKET	360° Adjustable	
SOLAR PANEL BRACKET	270° Adjustable	
CONNECTION CABLE	5 Meters Long	
HOUSING MATERIAL	ABS+PC+ALUMINIUM, Anti-UV, V0 Fireproof	
PACKING	1 Lamp, 1 Solar Panel, 1 Remote Control, 4 Set Screws, 1 User Manual	
IK RATING	IK07	

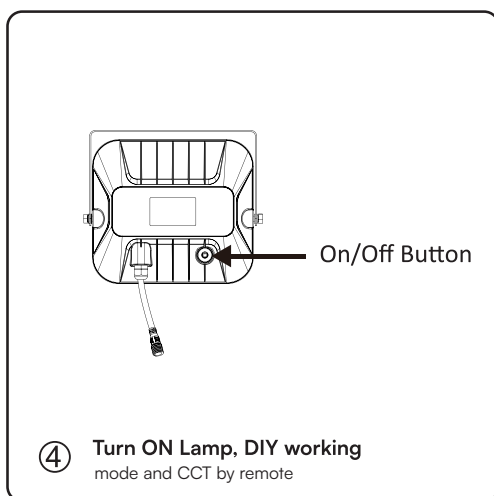
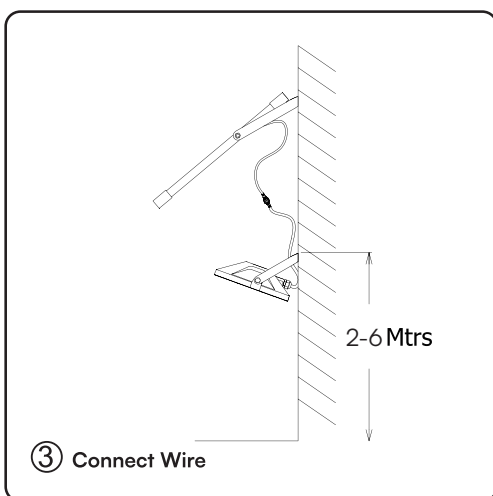
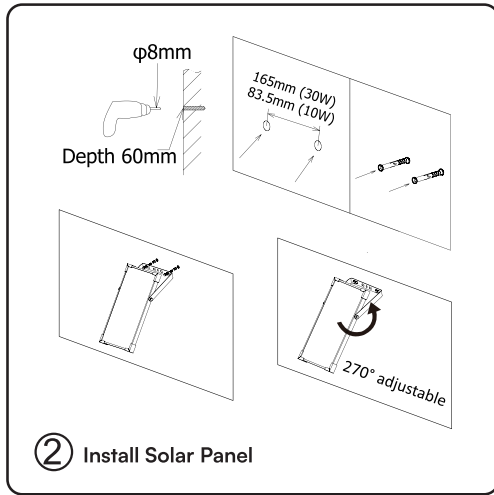
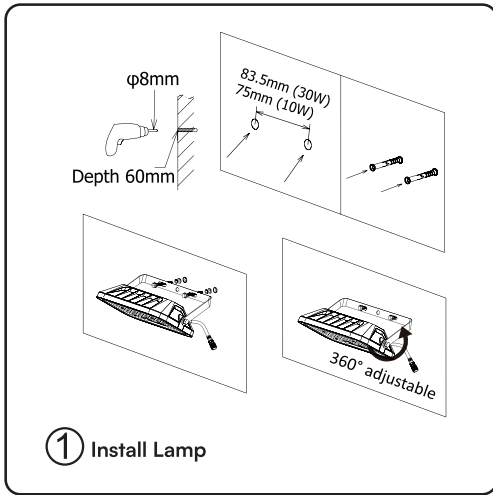
## WARNING

1. This is a solar powered lamp, please install the solar panel in a location where can get enough sunshine.
2. Please note the lighting time depends on sunshine duration & working mode.
3. The On/Off button on the lamp is power-off switch, helpful to save power consumption. Also the lamp can still get solar charge at day time when the lamp is turned off.
4. Built-in intelligent IC is with over-charge and over-discharge protection, safe & durable.
5. Non-professionals please do not disassemble the lamp.
6. Please do not dispose the battery with household garbage to avoid explosion.

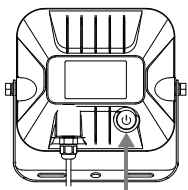
## INSTALLATION

Prepare the lamp, accessories and tools well, confirm the installation location and wire length.

1. Drill 2 holes of Ø8mm with a depth of 60mm on the wall, fix the lamp on the wall with expansion plugs and screws.
2. Drill 2 holes of Ø8mm with a depth of 60mm on the wall, fix the solar panel on the wall with expansion plugs and screws.
3. Connect the wire of the solar panel to the lamp and screw it tightly.
4. Press the button on the lamp to activate the remote control, then use remote control to set desired working mode and CCT.



## WORKING MODES

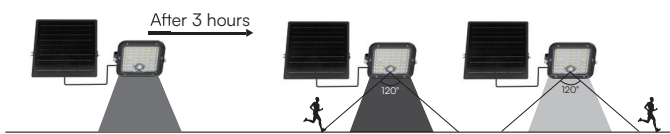


On/Off Button

Firstly, please press the button on the lamp, lamp turns on and automatically enter Keep Lighting Mode (Default Mode). Press the button again, lamp turns off.

After the lamp is turned on, then please use remote control to select demanded work mode and CCT.

### KEEP LIGHTING MODE (DEFAULT MODE)



Lamp automatically lights up at night and keeps 60% for 3 hours, after which lamp turns to Sensor Mode.

In this mode, you can select the desired lighting time and brightness by the remote control.

For example:

Press + (5H) , the lamp will work as below:

Lamp automatically lights up at night and keeps 40% brightness for 5 hours, after which lamp turns to Sensor Mode.

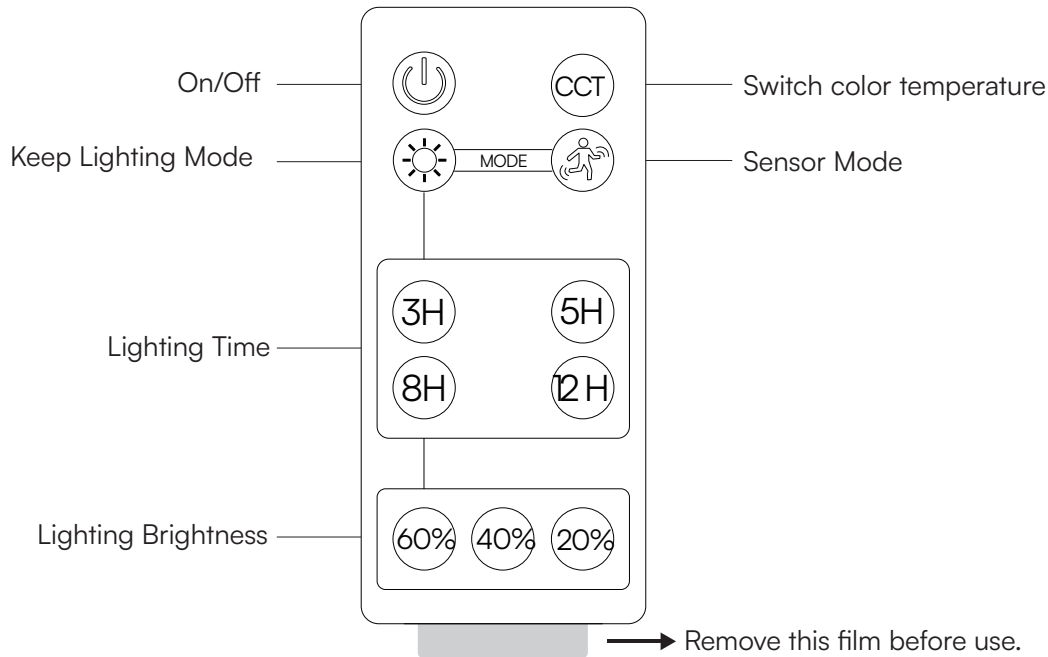
### SENSOR MODE



Lamp automatically lights up at night and turns to full brightness when motion is detected in the range, then turns to 5% brightness in 30 seconds of no motion.

## OPERATIONS OF DIY WORK MODE AND CCT BY REMOTE CONTROL

- \* Please remove the insulating film of the remote control before use.
- \* Remote control distance: 6 meters.
- \* Each time you press a button on the remote, the lamp flashes once.
- \* ON/OFF switch on the remote control has memory function.
- \* Lighting brightness and time can only be adjusted in Keep Lighting Mode.



## OPERATION OF INDICATOR LIGHT

This lamp has a red indicator light, which shows the charging state of the lamp.

Indicator Light Status During the Day	Working Status of Solar Lamp
Always on	Lamp is fully charge.
Flashes every 3 seconds	Solar panel is charging normally.
Off	The ambient sunlight is not strong enough to get the solar panel charged.

Indicator Light Status At Night	Working Status of Solar Lamp
Off	Lamp discharges and works well.
Flashes every second	Lamp discharges and works well, but battery power is less then 30%.

### REMOTE CONTROL SAFETY INSTRUCTIONS

- Before using this product, make sure that all parts are configured correctly according to the instructions in the attached instruction.
- The product should not be used by persons under 5 years of age without supervision by a parent or guardian.
- Ensure that the power batteries are configured correctly and have the appropriate parameters as specified by the manufacturer.

## MAINTENANCE & WARNING

- Do not use solvents, petrol, etc. Otherwise the light will be damaged.
- Clean the light with a dry, lint-free cloth.
- Check the solar panel for dirt regularly. If dirt or is present remove it to guarantee flawless function of the product.
- Especially during the winter, keep the product free from snow and ice.
- Confirm installation direction is correct (solar panel should be at top)
- Confirm no objects blocking the solar panel to receive sunlight
- Keep away from the fire.
- Don't immerse in the water

## IMPORTANT NOTES

- This product contains battery type "Secondary" (rechargeable).
- Electrical and electronic equipment that has become waste is known as old equipment/device. Old devices must not be disposed of with other household waste.
- Owners of old devices at the end of its service life must return the device by taking them to the collection points set up by public waste disposal authorities or distributors. This return does not entail any costs for you.
- Owners of old devices have an obligation to remove accessible batteries / rechargeable batteries as well as non-destructively removable lamps from the old device prior to return. This does not apply if old devices are being prepared for reuse with the participation of a public law firm.
- Battery removal warning: The battery contained in this product must be removed only by professional personnel only. The battery must never be removed by the end user, if not removed correctly it could damage the battery which could cause fire.
- Batteries removed from an old electronic device should be disposed of separately. This return of battery does not entail any costs for you and the user is obliged to return the battery.
- Please make sure that this product is not powered on when removing the battery. Fire hazard! Avoid short-circuiting the contacts of a detached battery. Do not incinerate the battery. Please handle the battery with Caution!
- If electrical appliances or batteries are disposed of in landfills or dumps, hazardous substances can leak into the groundwater and get into the food chain, damaging your health and well-being.



- The symbol of "Crossed rubbish bins "indicates that this product should not be disposed of with other household wastes and must be collected separately from unsorted municipal waste at the end of its service life.
- Please use the link below to view the online directory of the collection and return points:<https://www.ear-system.de/ear-verzeichnis/sammel-und-ruecknahmestellen>



**VTAC EUROPE LTD.** IN CASE OF ANY QUERY/ISSUE WITH THE PRODUCT, PLEASE REACH OUT TO US AT: [SUPPORT@V-TAC.EU](mailto:SUPPORT@V-TAC.EU)  
FOR MORE PRODUCTS RANGE, INQUIRY PLEASE CONTACT OUR DISTRIBUTOR OR NEAREST DEALERS.  
V-TAC EUROPE LTD. BULGARIA, PLOVDIV 4000, BUL.L.KARAVELOW 9B

**V-TAC UK LTD.** IN CASE OF ANY QUERY/ISSUE WITH THE PRODUCT PLEASE REACH OUT TO US AT  
[SUPPORT@VTACEXPORTS.COM](mailto:SUPPORT@VTACEXPORTS.COM) V-TAC, 5A TUNGSTEN PARK, DOWNS ROAD, WITNEY, OXFORDSHIRE, OX29 OAX